

Road Map



Hybrid Map

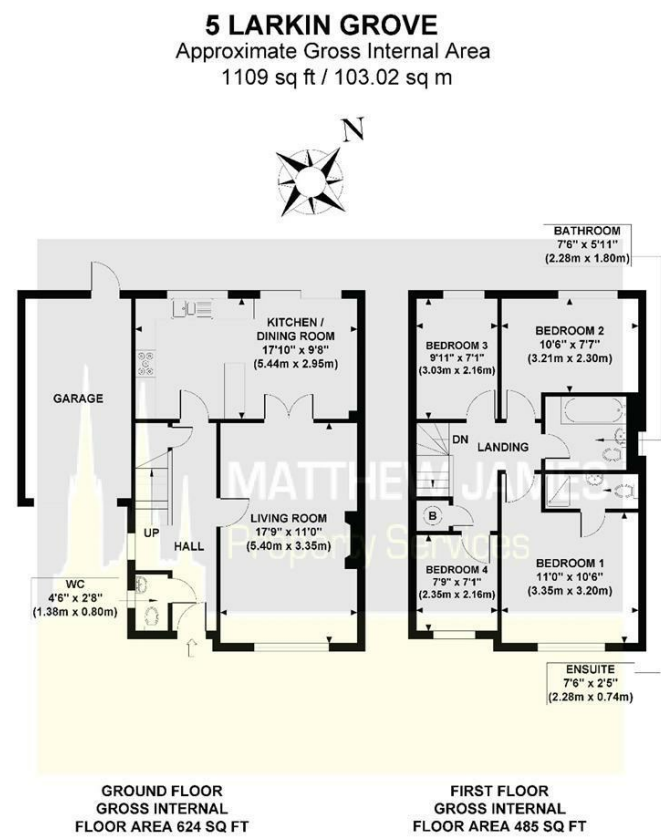


Terrain Map



MATTHEW JAMES
Property Services

Floor Plan



Although every attempt has been made to ensure accuracy, all measurements are approximate and no responsibility is taken for any error, omission, or mis-statement. This floor plan is for illustrative purposes only and not to scale. Measured in accordance to RICS standards.



5 Larkin Grove

Walsgrave, Coventry CV2 2UA

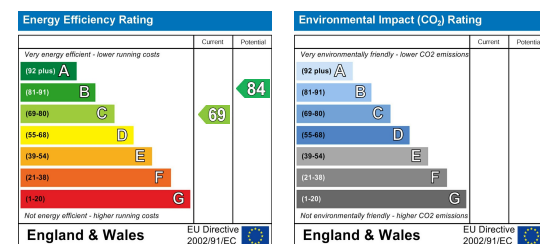
Offers Over £345,000



Viewing

Please contact us on 02477 170170 if you wish to arrange a viewing appointment for this property or require further information.

Energy Efficiency Graph



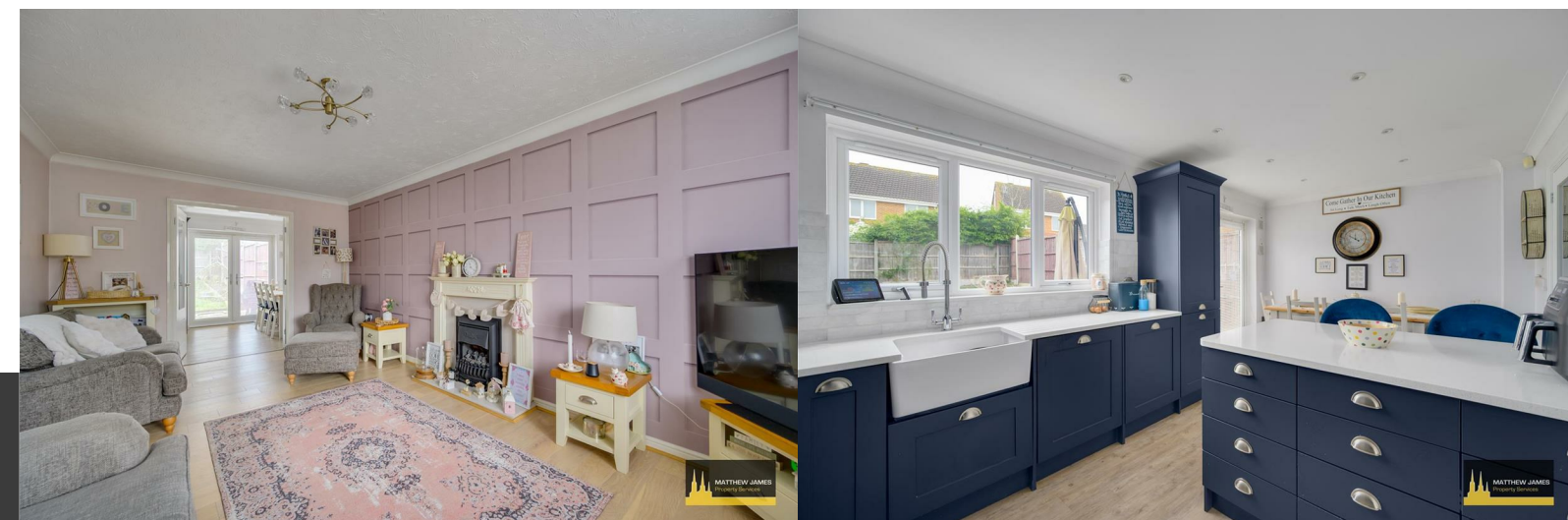
These particulars, whilst believed to be accurate are set out as a general outline only for guidance and do not constitute any part of an offer or contract. Intending purchasers should not rely on them as statements of representation of fact, but must satisfy themselves by inspection or otherwise as to their accuracy. No person in this firm's employment has the authority to make or give any representation or warranty in respect of the property.

CONTACT INFORMATION

24a Warwick Row, Coventry CV1 1EY
02477 170170

info@matthewjames.uk.com
www.matthewjames.uk.com

Facebook
Twitter



5 Larkin Grove

Walsgrave, Coventry CV2 2UA

Offers Over £345,000



Approach

Entrance Hallway

Downstairs WC

4'6 x 2'8

Living Room

17'9 x 11'0

Kitchen/Dining Room

17'10 x 9'8

Hallway Landing

Bedroom One

11'0 x 10'6

En-Suite

7'6 x 2'5

Bedroom Two

10'6 x 7'7

Bedroom Three

9'11 x 7'1

Family Bathroom

7'6 x 5'11

Bedroom Four

7'1 x 7'9

Rear Garden

Garage & Driveway

Church Views

